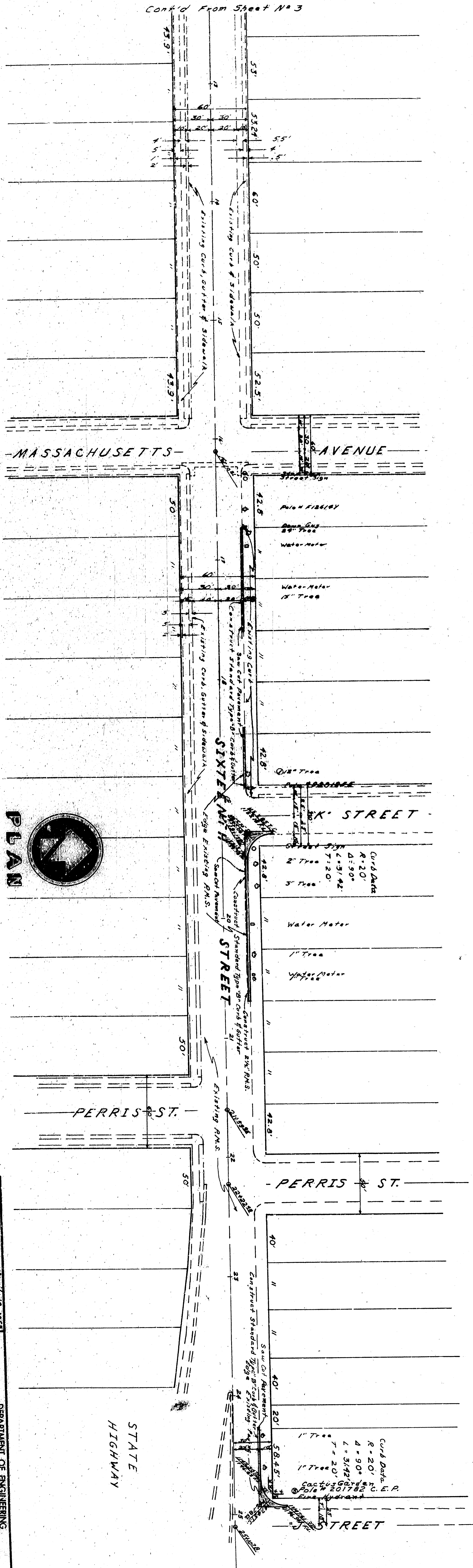


Cont'd From Sheet No 3

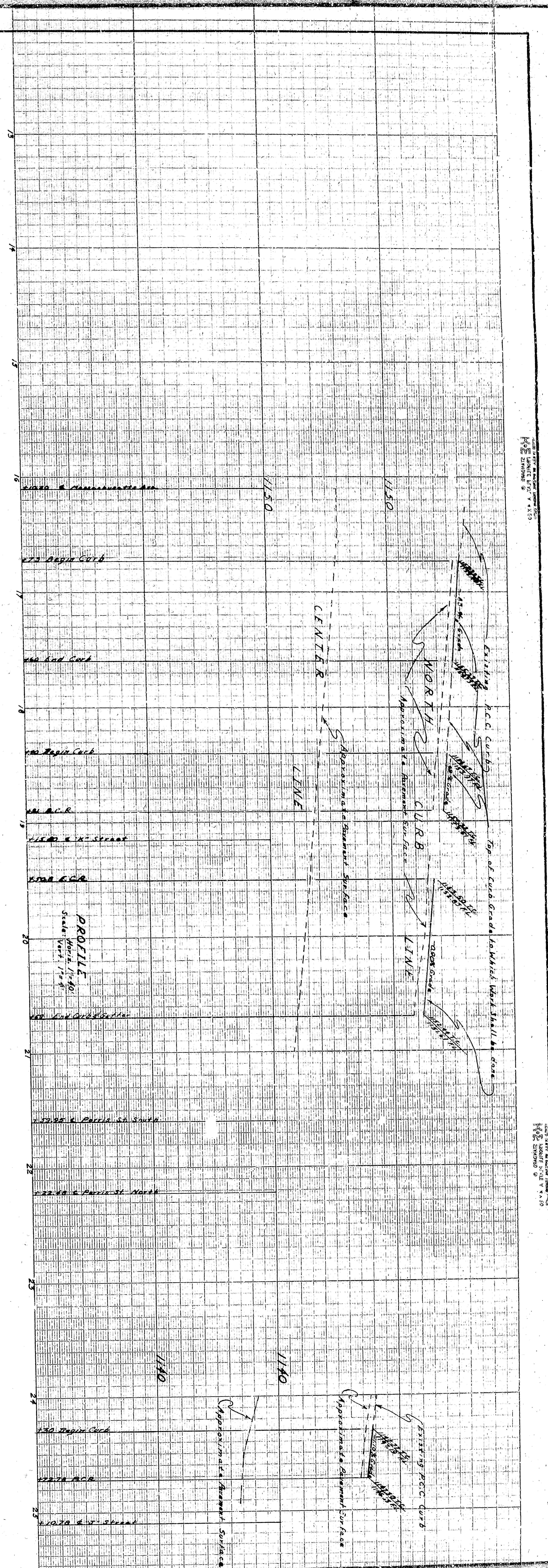


BENCH MARK
Screw N/W Corner Massachusetts Ave & Sixteenth St Elev. 1156.92 N.S.L.



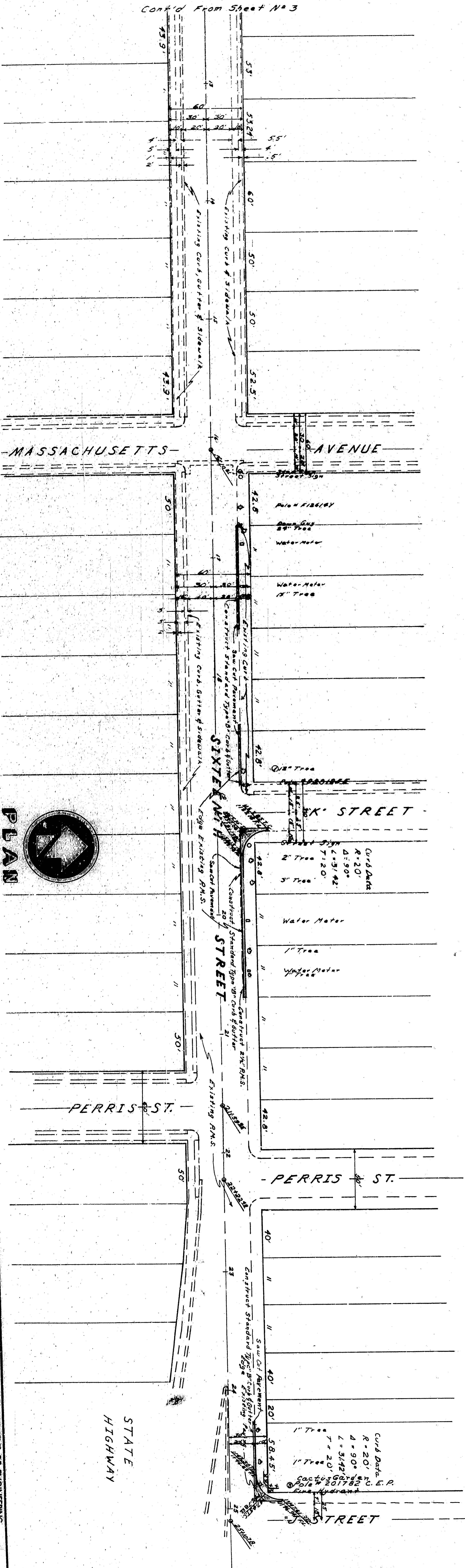
Scale: 1" = 20'

| | | |
|--|-------------|------|
| APPROVED | DATE | BY |
| REGISTERED CIVIL ENGINEER NO. 1850 | 27 9 9 | DEAN |
| DRAWING | BY | DEAN |
| CHECKED BY | DEAN | |
| SHEET 4 OF 6 | RECOMMENDED | |
| CITY OF SAN BERNARDINO DEPARTMENT OF ENGINEERING CURB, GUTTER & PAVING SIXTEENTH STREET MT. VERNON AVENUE TO FREEWAY | | |

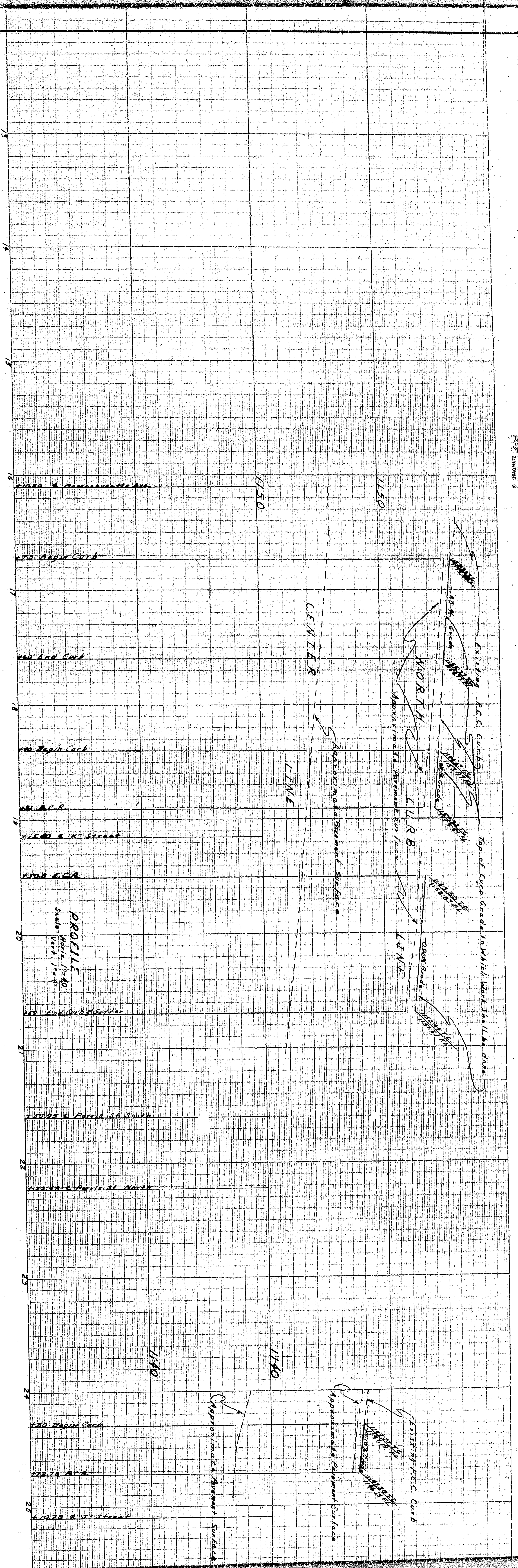


REPRODUCED FROM ORIGINAL DRAWING

Cont'd From Sheet No 3



BENCH MARK
Screw N/W Corner Massachusetts Ave & Sixteenth St Elev. 1156.92 N.S.L.



| | | |
|------------------------------------|----------------|-----------------------|
| APPROVED | DATE | BY |
| REGISTERED CIVIL ENGINEER NO. 1850 | APRIL 22, 1963 | [Signature] |
| DRAWING NO. 2799 | DESIGNED BY | DR. J. K. [Signature] |
| CHECKED BY | DESK | [Signature] |
| SHEET 4 OF 6 | RECOMMENDED | |

CITY OF SAN BERNARDINO
 DEPARTMENT OF ENGINEERING
 CURB, GUTTER & PAVING
 SIXTEENTH STREET
 MT. VERNON AVENUE TO FREEWAY